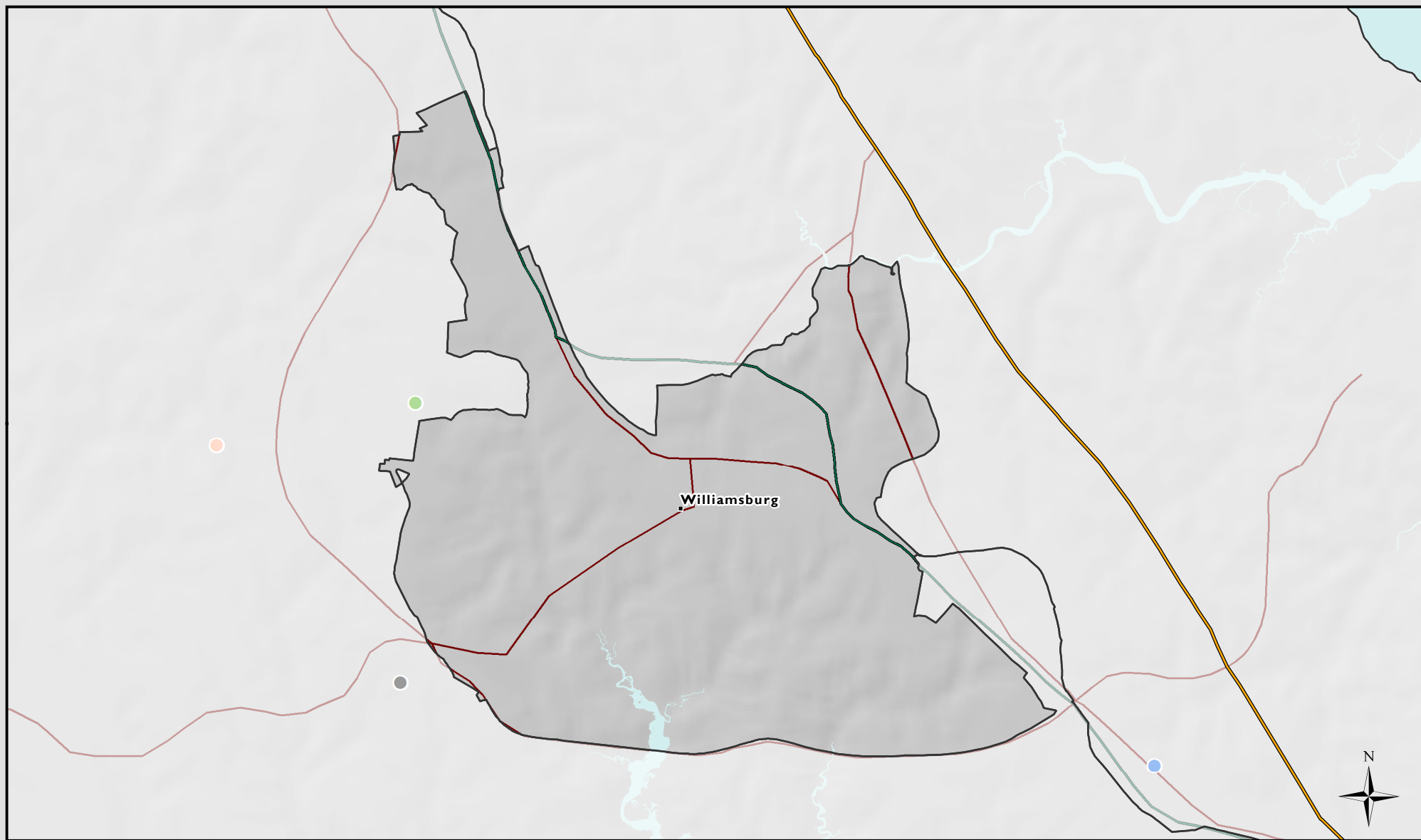


# Williamsburg

## Health Information Exchange Status



Total population of Williamsburg as of 2010: **14,068**

HIE Status per Facility:

- Yes
- No or No Response

- Planning
- Uncertain

- Results of the BroadAxe E-Health Survey 2012

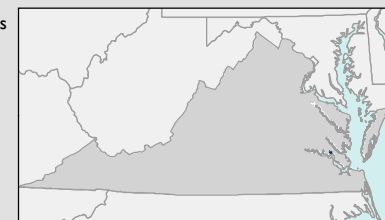
0 2 Miles

1:55,650

Coordinate System: NAD 1983 HARN Virginia Lambert

Data Sources: USGS, CIT, VGIN, VITA, US Census Bureau

Data Current as of October 2014



*HIE (Health Information Exchange) is the process of sharing digital health related information between multiple health providers that are not in the same group (i.e., physician practices and hospitals).*

Virginia Broadband Map..... <http://gismaps.vita.virginia.gov/broadband>  
 Virginia Office of Telework Promotion and Broadband Assistance... <http://www.wired.virginia.gov/>  
 CGIT Broadband Planning and Analysis Toolbox..... <http://www.cgitt.vt.edu/broadband/>

\*Data may not be complete or comprehensive