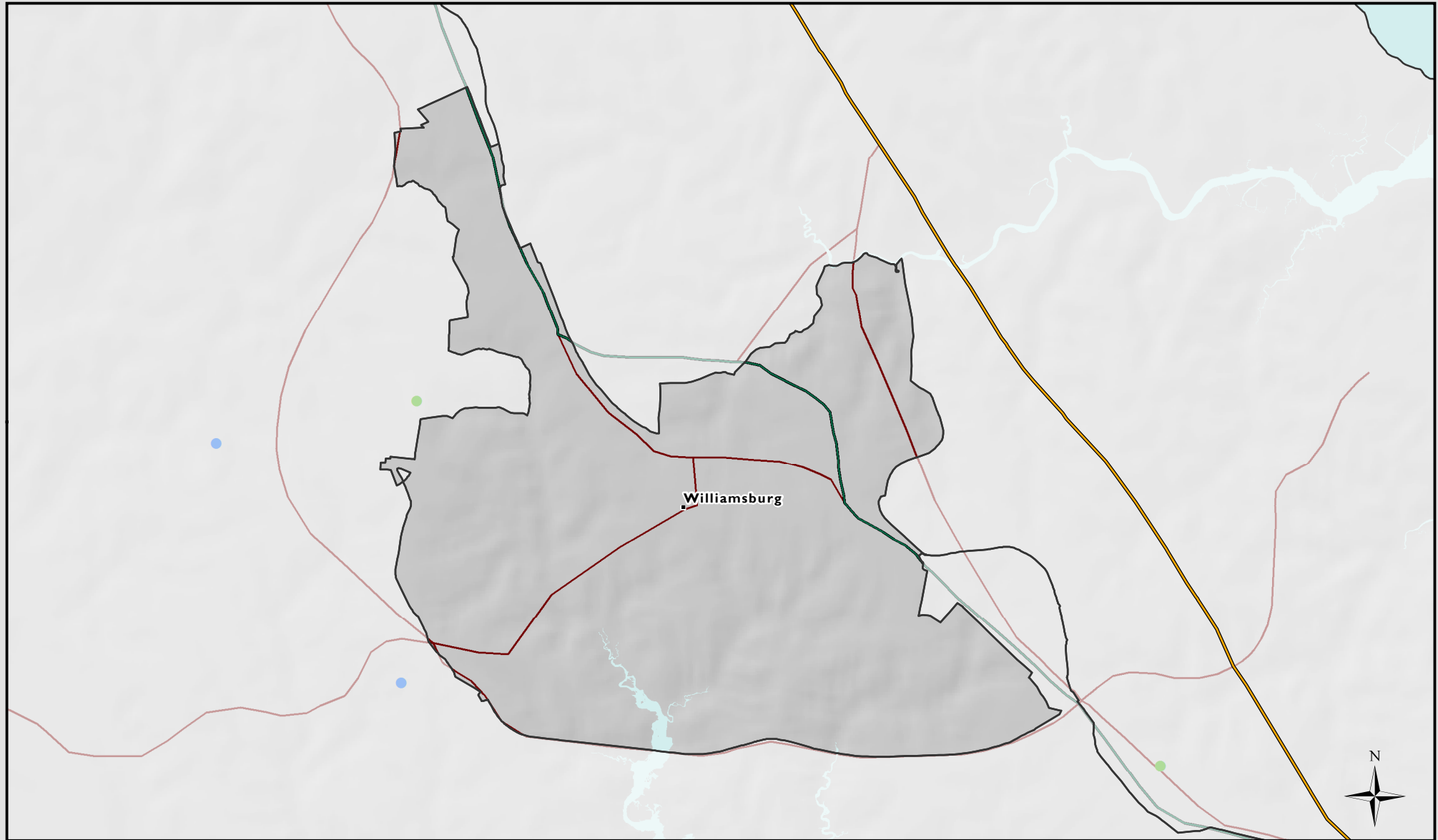


# Williamsburg

## Emergency Health Record (EHR) Usage



Total population of Williamsburg as of 2010: **14,068**

Usage of EHRs\* :

<span style="color: green;">●</span> Yes	<span style="color: blue;">●</span> Planning
<span style="color: black;">●</span> No or No Response	<span style="color: orange;">●</span> Uncertain

- Results of the BroadAxe E-Health Survey 2012

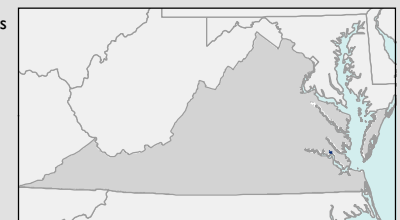
0 2 Miles

1:55,580

Coordinate System: NAD 1983 HARN Virginia Lambert

Data Sources: USGS, CIT, VGIN, VITA, US Census Bureau

Data Current as of October 2014



*\*An electronic health record (EHR) is an evolving concept that involves systematic collection of health information about individual patients or populations. Since EHRs are digital in format, they have the capability to be shared across different settings.*

Virginia Broadband Map..... <http://gismaps.vita.virginia.gov/broadband>  
 Virginia Office of Telework Promotion and Broadband Assistance... <http://www.wired.virginia.gov/>  
 CGIT Broadband Planning and Analysis Toolbox..... <http://www.cgitt.vt.edu/broadband/>

\*Data may not be complete or comprehensive