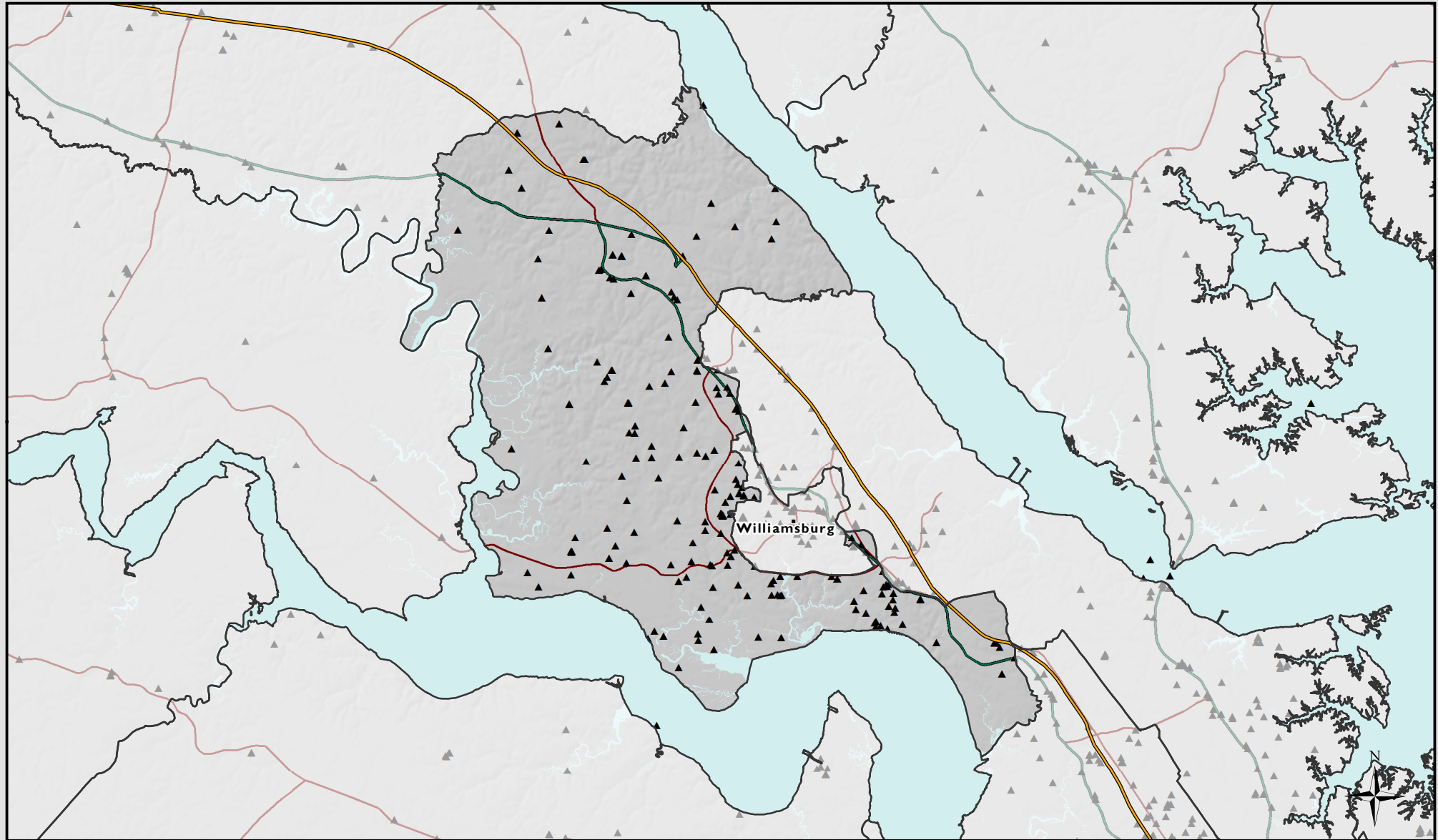


James City County

Vertical Assets



Total population of James City County as of 2010: **67,009**

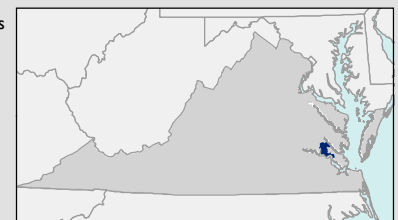
Vertical Assets in James City County: **234**

▲ **Vertical Asset**

1:257,350
Coordinate System: NAD 1983 HARN Virginia Lambert
Data Sources: USGS, CIT, VGIN, VITA, US Census Bureau
Data Current as of October 2014

Vertical Assets: Vertical Assets are tall structures that have potential to serve as wireless transmission sites. Considerations for using Vertical Assets as wireless transmission sites include condition of the structure, access to electricity, and height relative to the surrounding area.

Virginia Broadband Map..... <http://gismaps.vita.virginia.gov/broadband>
Virginia Office of Telework Promotion and Broadband Assistance... <http://www.wired.virginia.gov/>
CGIT Broadband Planning and Analysis Toolbox..... <http://www.cgitt.vt.edu/broadband/>



*Data may not be complete or comprehensive