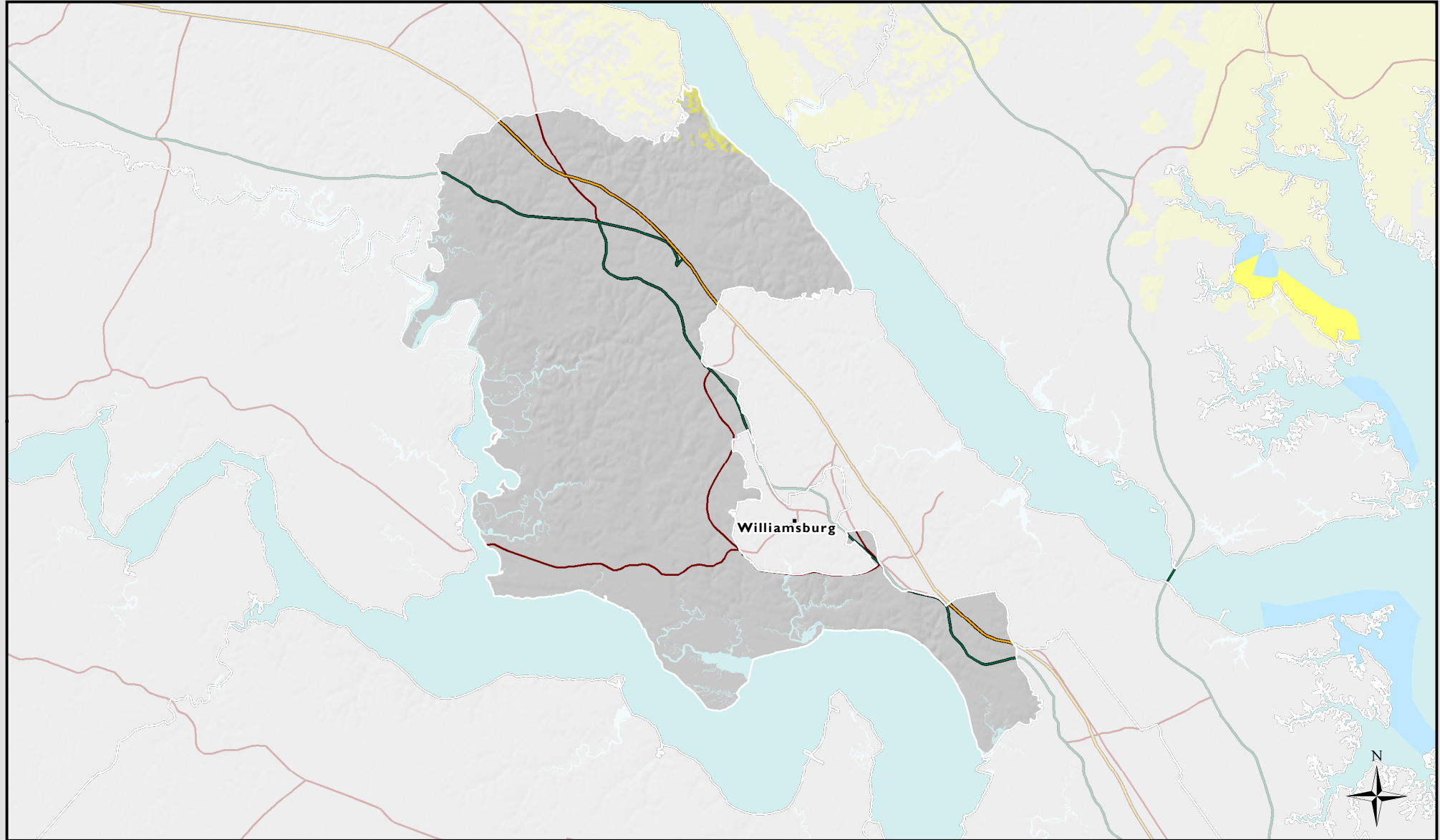


James City County

Fixed Wireless Coverage



Total population of James City County as of 2010: **67,009**

Total area of James City County covered by Fixed Wireless: **0%**

Fixed Wireless: Fixed wireless enables broadband service by transmitting a signal through the air. This wireless service includes WiFi, Bluetooth, and other similar technologies (WiMAX and other proprietary wireless systems).

Fixed Wireless Providers Maximum Advertised Speeds

Download: Varies by locality, 768 Kbps - 25 Mbps

Upload: Varies by locality, 200 Kbps - 25 Mbps

 **Fixed Wireless**

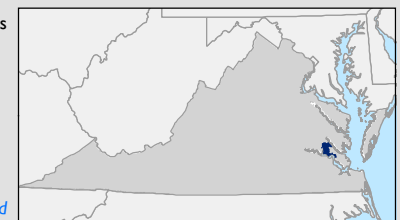
0 10 Miles

1:257,330

Coordinate System: NAD 1983 HARN Virginia Lambert

Data Sources: USGS, CIT, VGIN, VITA, US Census Bureau

Data Current as of October 2014



Virginia Broadband Map..... <http://gismaps.vita.virginia.gov/broadband>
Virginia Office of Telework Promotion and Broadband Assistance... <http://www.wired.virginia.gov/>
CGIT Broadband Planning and Analysis Toolbox..... <http://www.cgitt.edu/broadband/>

*Data may not be complete or comprehensive