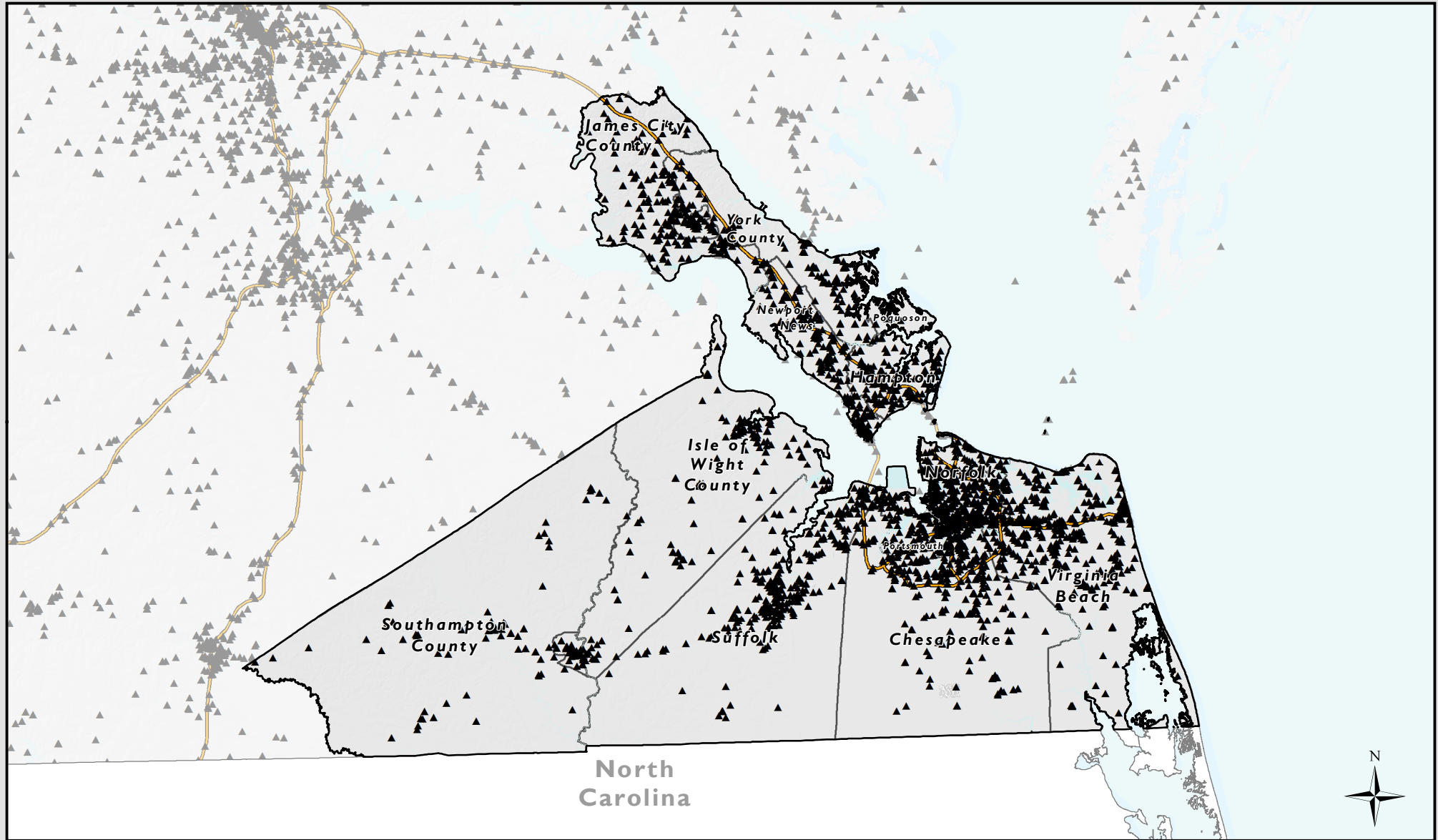


Hampton Roads PDC

Vertical Assets



Total population of the Hampton Roads PDC as of 2010: **1,622,394**

Vertical Assets in the Hampton Roads PDC: **3790**

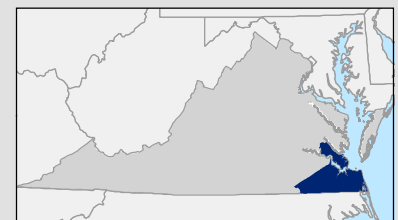
Vertical Asset: Vertical Assets are tall structures that have potential to serve as wireless transmission sites. Considerations for using Vertical Assets as wireless transmission sites include condition of the structure, access to electricity, and relative height to the surrounding area.

▲ **Vertical Asset**

0 20 Miles
1:826,080

Coordinate System: NAD 1983 HARN Virginia Lambert
Data Sources: USGS, CIT, VGIN, VITA, US Census Bureau
Data Current as of October 2014

Virginia Broadband Map..... <http://gismaps.vita.virginia.gov/broadband>
Virginia Office of Telework Promotion and Broadband Assistance... <http://www.wired.virginia.gov/>
CGIT Broadband Planning and Analysis Toolbox..... <http://www.cgitt.vt.edu/broadband/>



*Data may not be complete or comprehensive