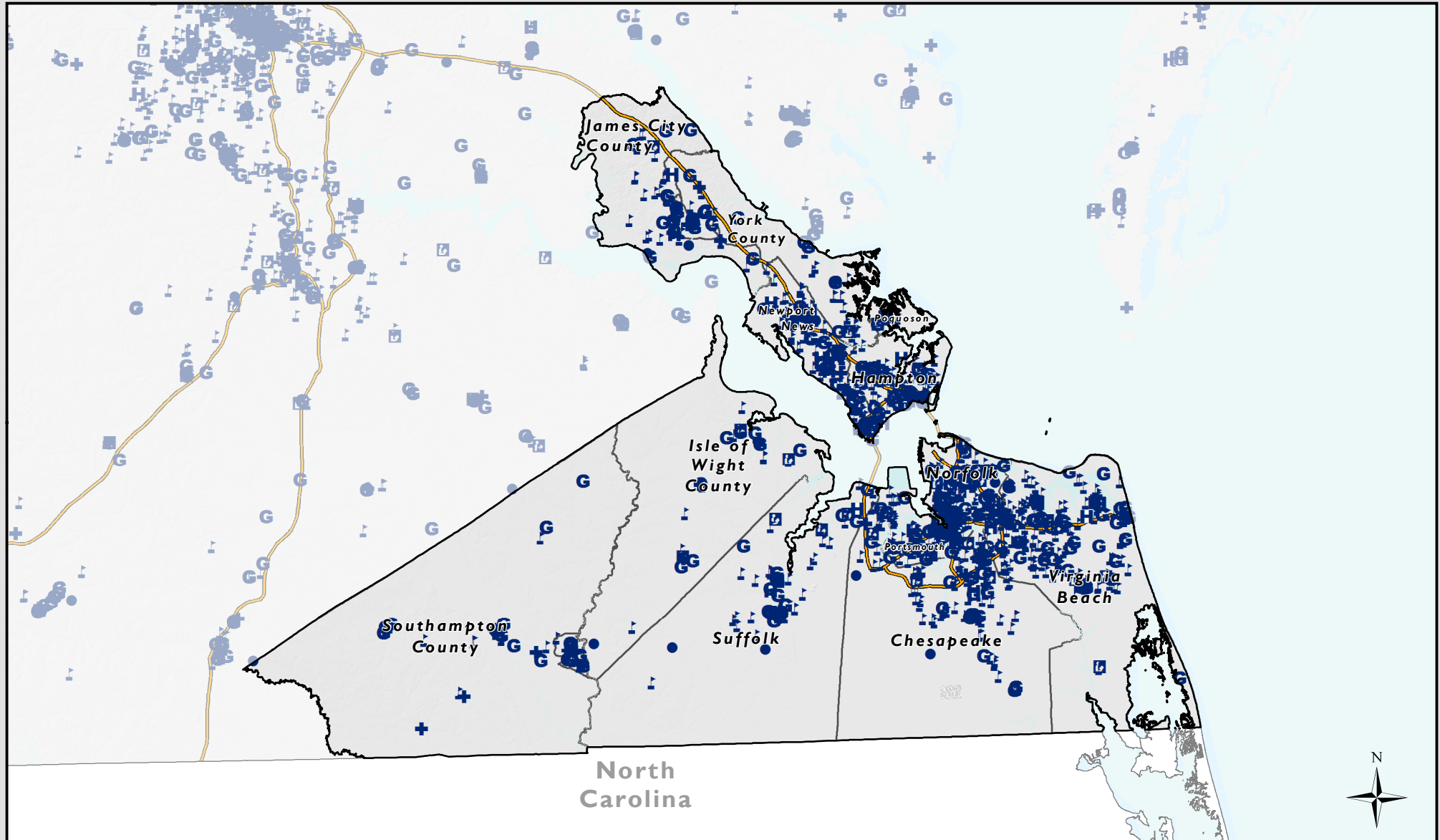


Hampton Roads PDC

Community Anchor Institutions (CAIs)



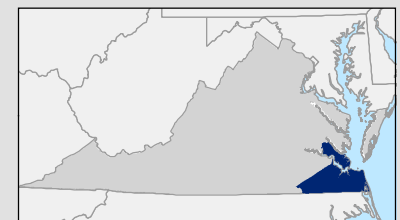
Total population of the Hampton Roads PDC as of 2010: **1,622,394**

Community Anchor Institution: Community Anchor Institutions are public establishments, including but not limited to schools, hospitals, libraries, and government facilities. The US Unified Community Anchor Network (U.S. UCAN) seeks to connect these institutions to advanced broadband internet

Schools: 503	Public Safety Entity: 58
Libraries: 57	Universities: 66
Hospitals: 34	Government Buildings: 265
	Other: 11

0 20 Miles
1:827,770

Coordinate System: NAD 1983 HARN Virginia Lambert
Data Sources: USGS, CIT, VGIN, VITA, US Census Bureau
Data Current as of October 2014



Virginia Broadband Map..... <http://gismaps.vita.virginia.gov/broadband>
Virginia Office of Telework Promotion and Broadband Assistance... <http://www.wired.virginia.gov/>
CGIT Broadband Planning and Analysis Toolbox..... <http://www.cgitt.vt.edu/broadband/>

*Data may not be complete or comprehensive