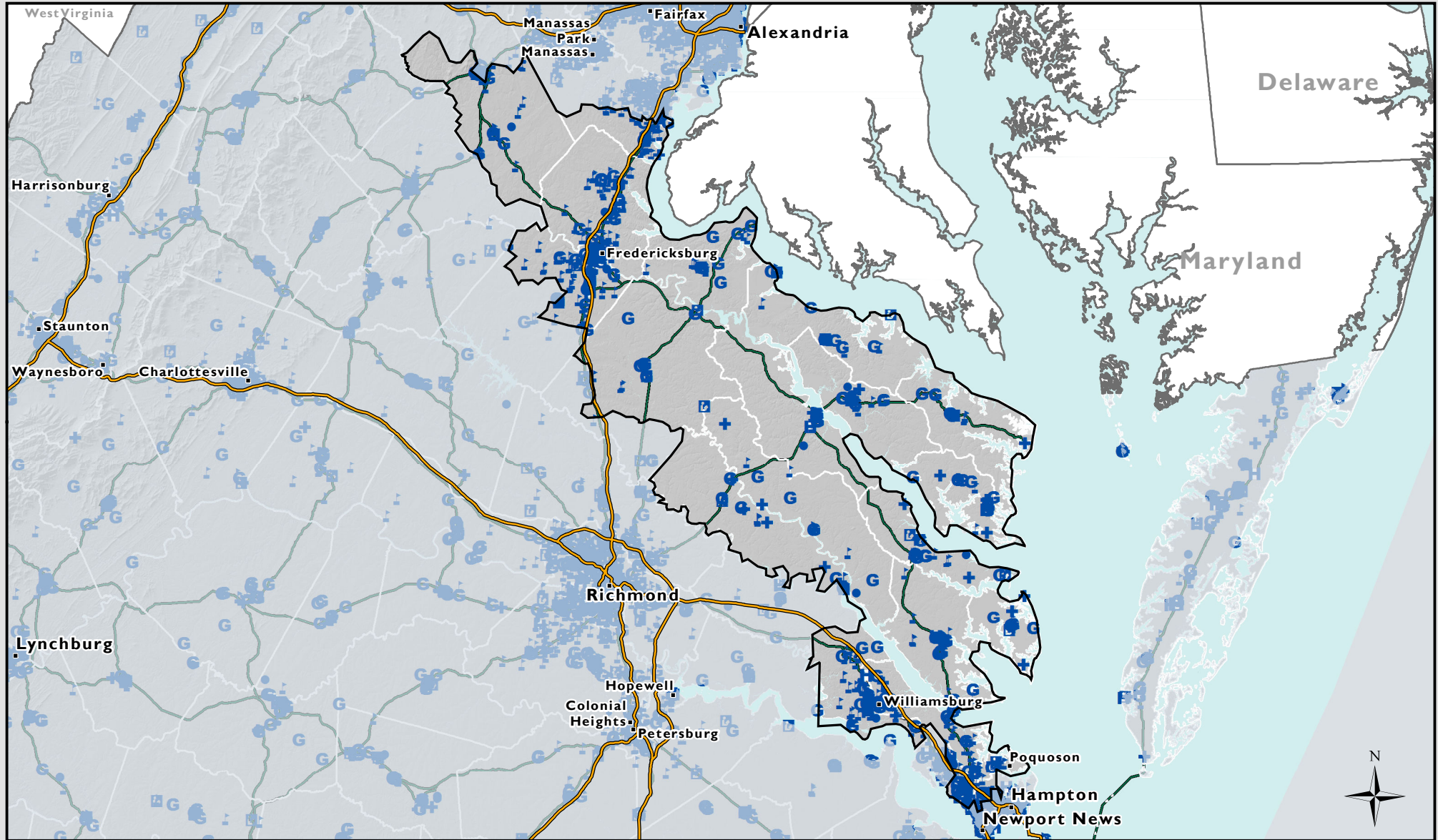


Virginia's 1st Congressional District

Community Anchor Institutions (CAIs)



Total population of the 1st Congressional District as of the 111th congress: **786,237**

Community Anchor Institution (CAI):

Community Anchor Institutions are public establishments, including but not limited to schools, hospitals, libraries, and government facilities. The US Unified Community Anchor Network (U.S. UCAN) seeks to connect these institutions to advanced broadband internet capabilities.

Schools: 278	Police Departments: 64
Libraries: 33	Universities: 24
Hospitals: 18	Government Buildings: 219
	Other: 10

0 20 40 Miles

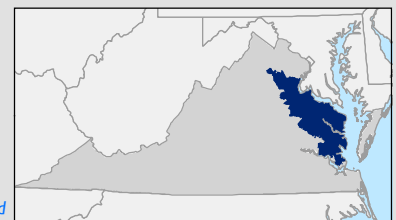
1:1,350,720

Coordinate System: NAD 1983 HARN Virginia Lambert

Data Sources: USGS, CIT, VGIN, VITA, US Census Bureau

Data Current as of October 2014

Virginia Broadband Map..... <http://gismaps.vita.virginia.gov/broadband>
 Virginia Office of Telework Promotion and Broadband Assistance... <http://www.wired.virginia.gov/>
 CGIT Broadband Planning and Analysis Toolbox..... <http://www.cgivt.edu/broadband/>



*Data may not be complete or comprehensive